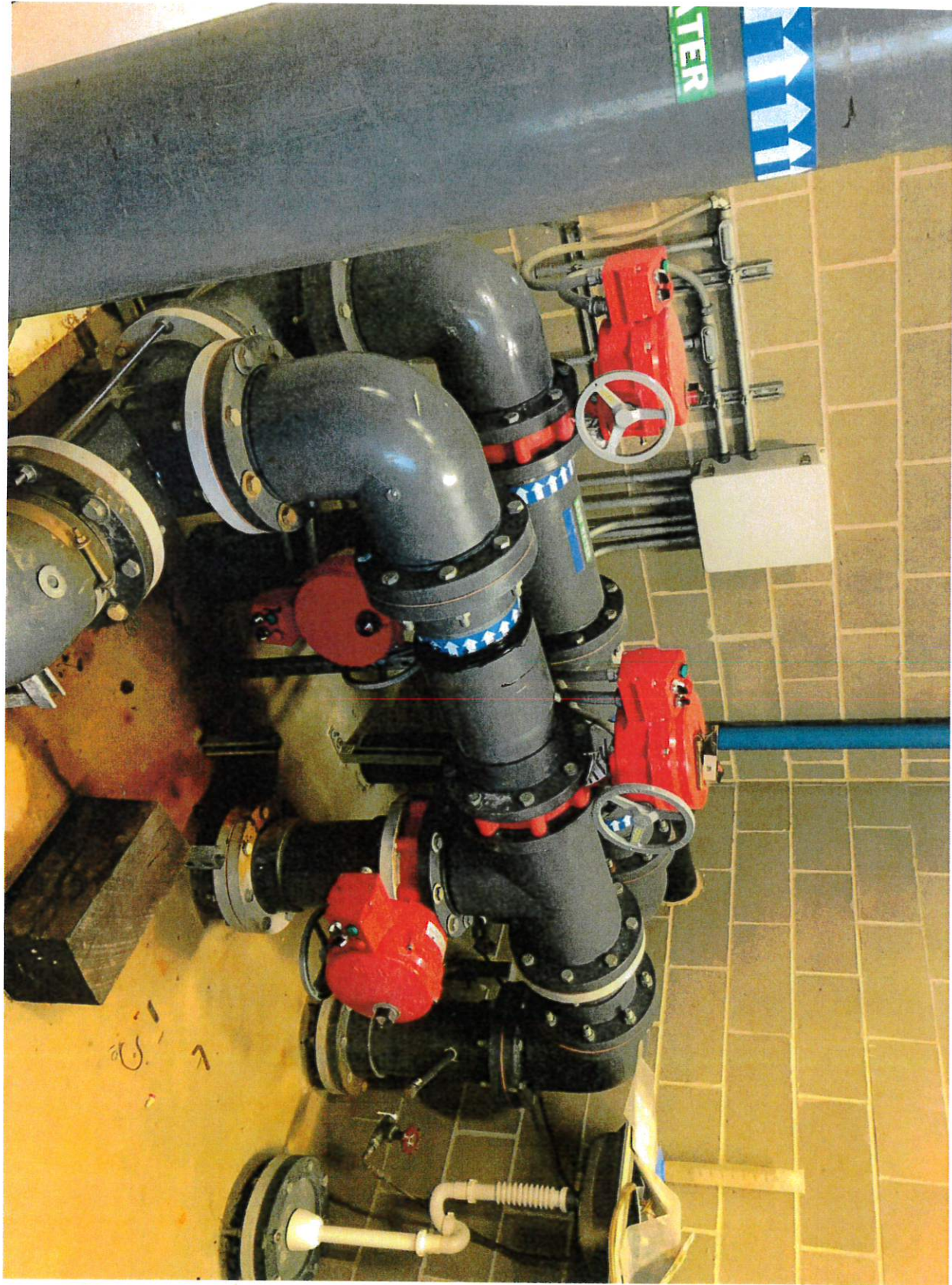


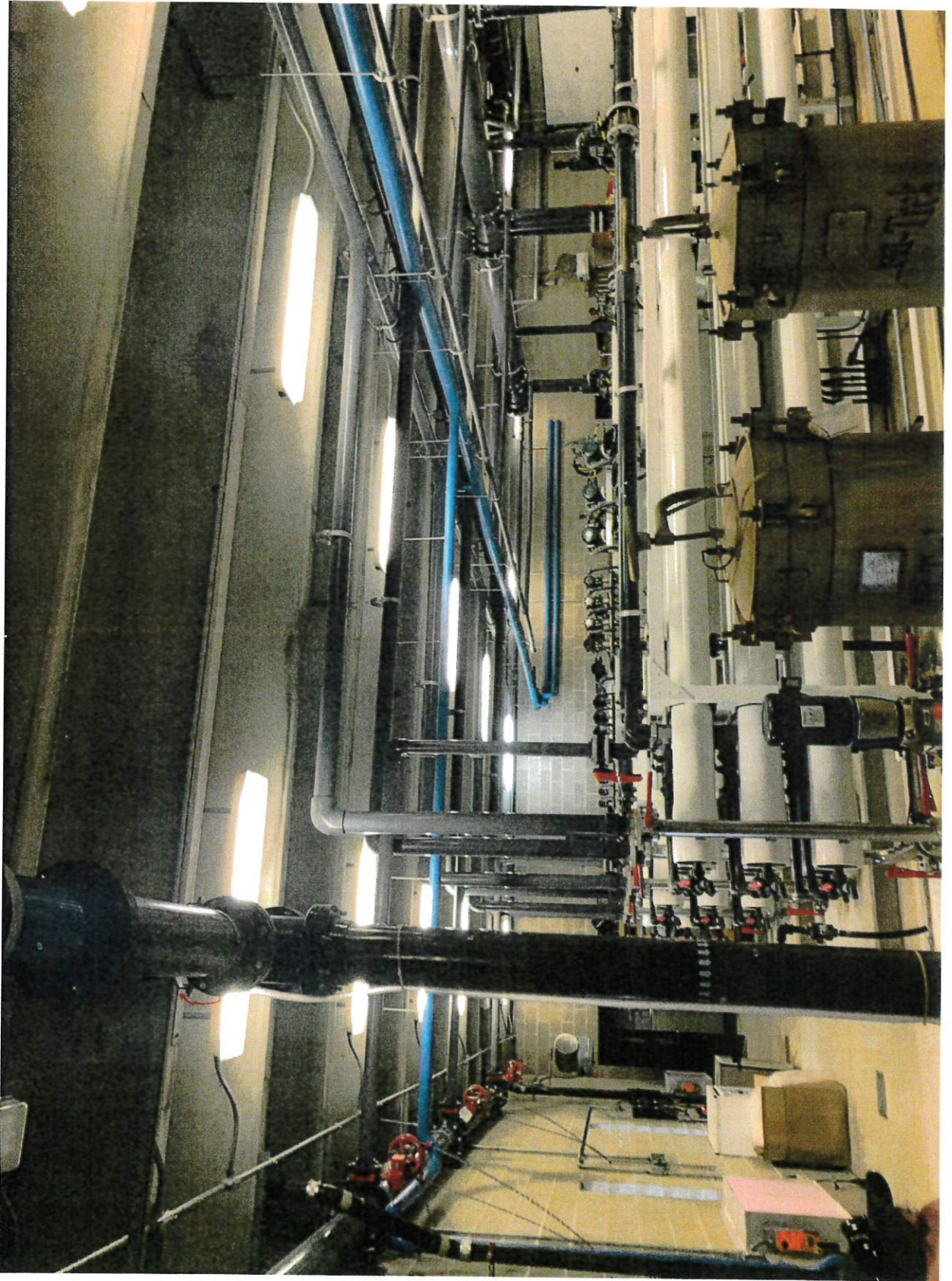
**CITY OF RIVERSIDE COUNCIL WORK SESSION  
WATER TREATMENT PLANT  
3126 HWY 22**

COUNCIL WORK SESSION  
Monday, September 19, 2022 – 5:00 P.M.

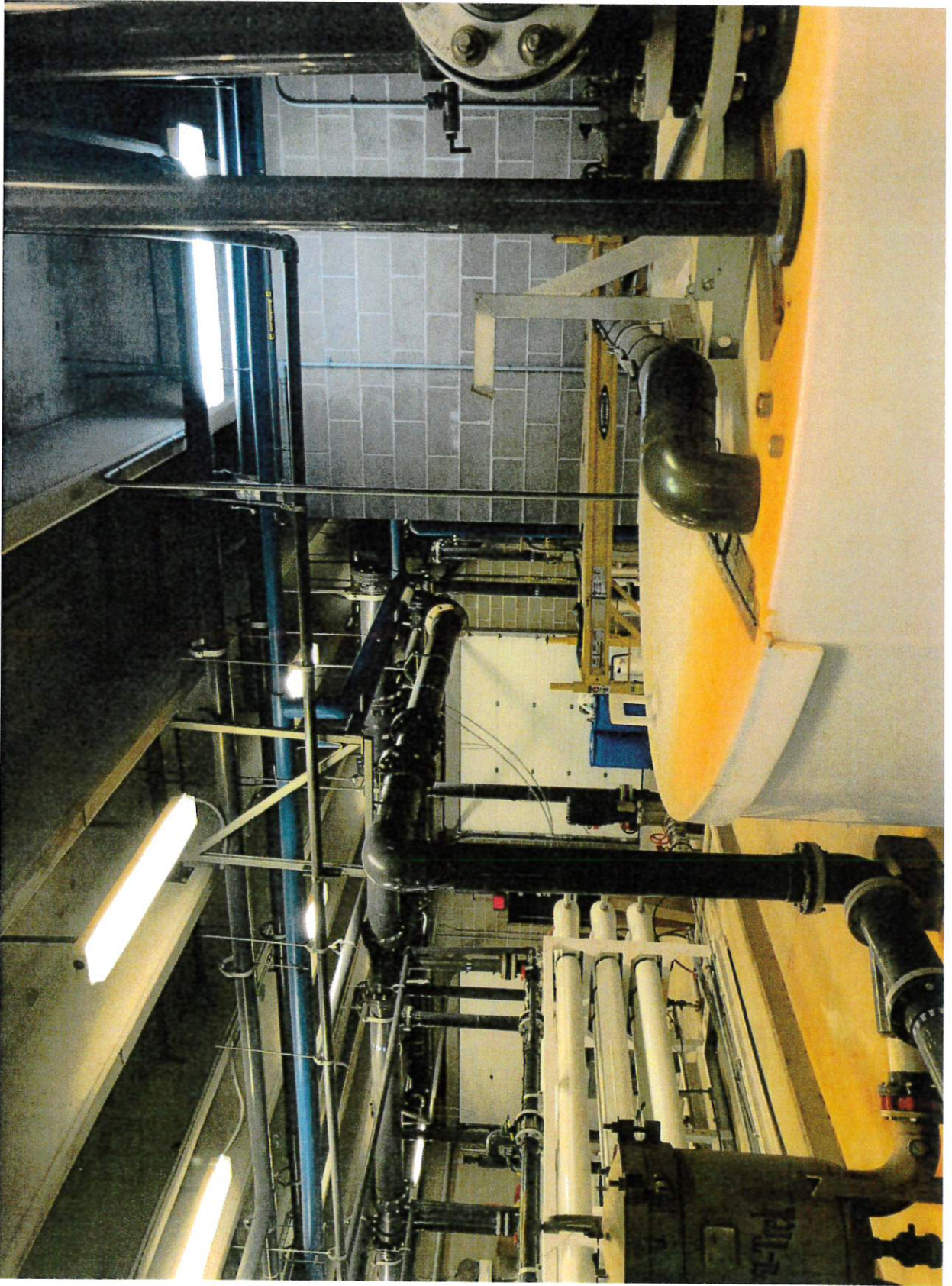
1. Review of Repair Issues at Water Treatment Plant with Engineers

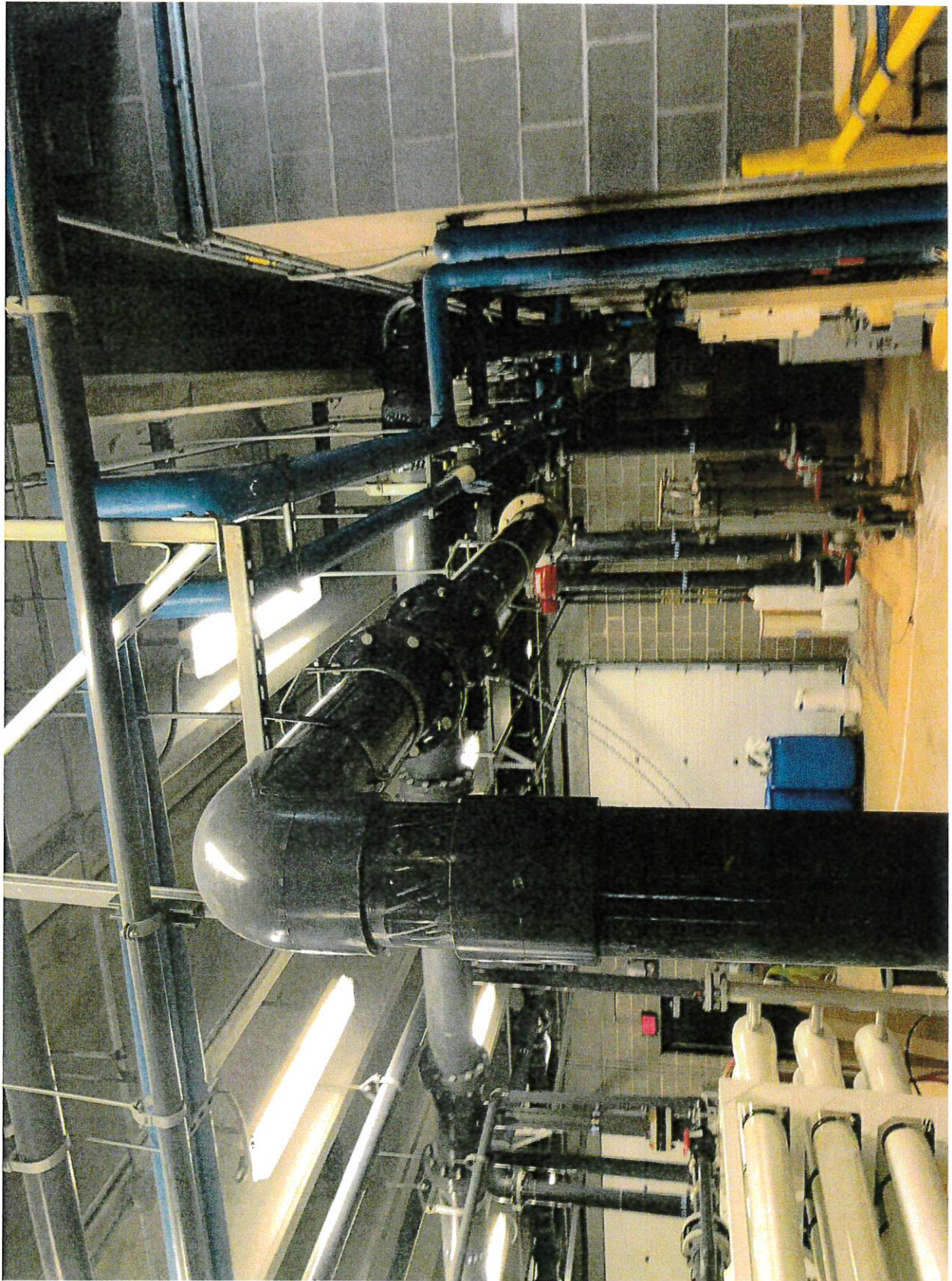


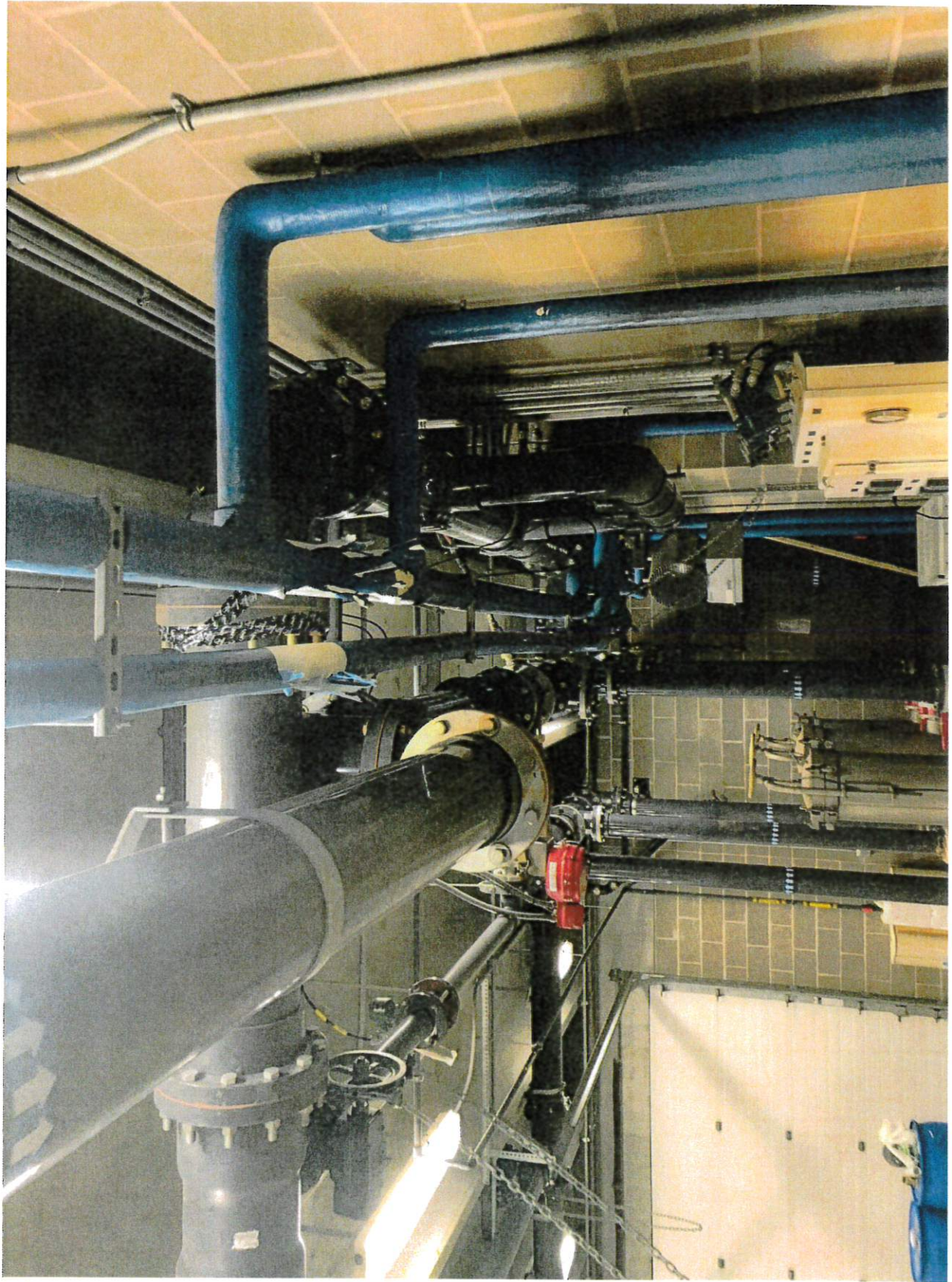






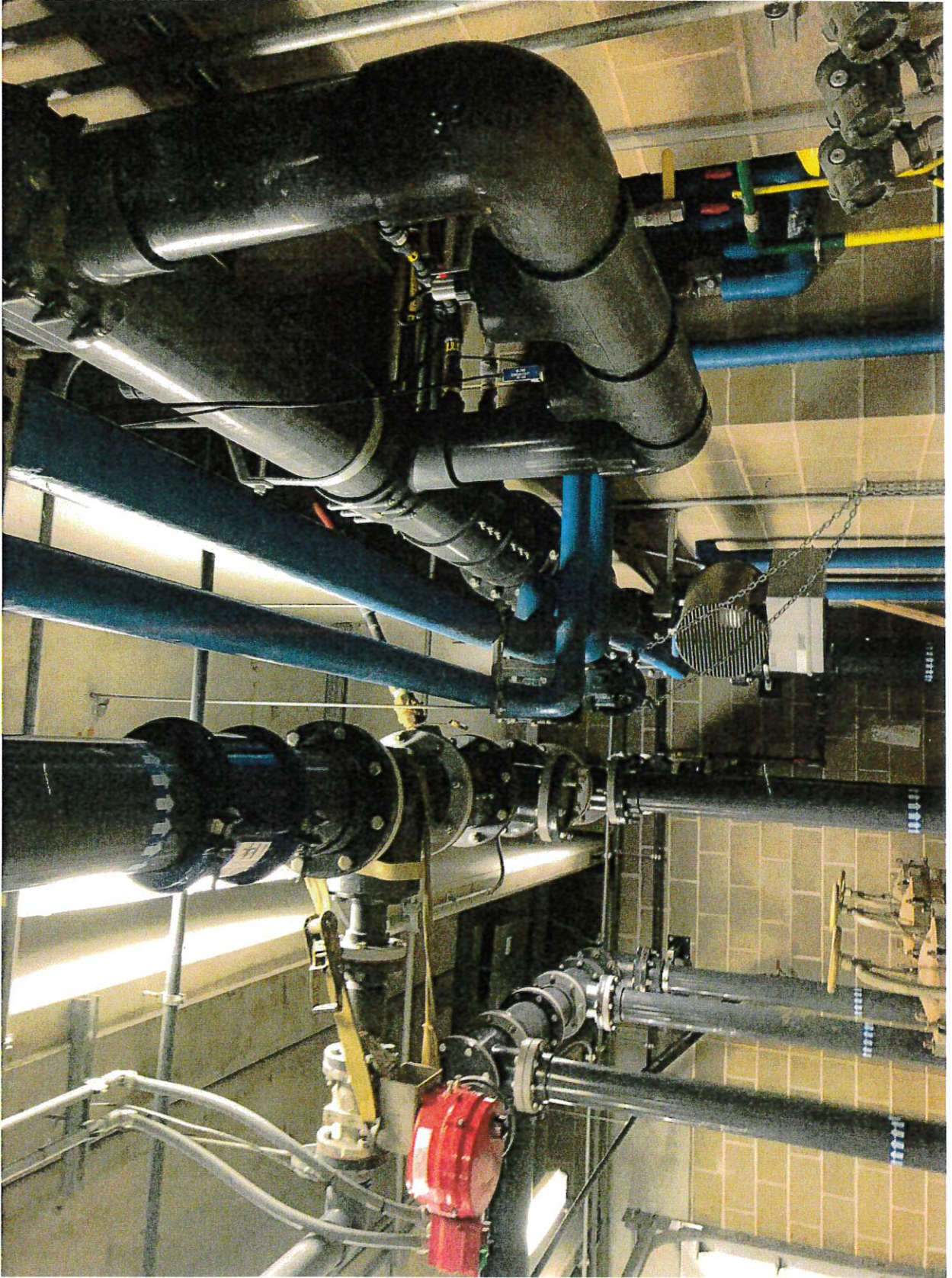


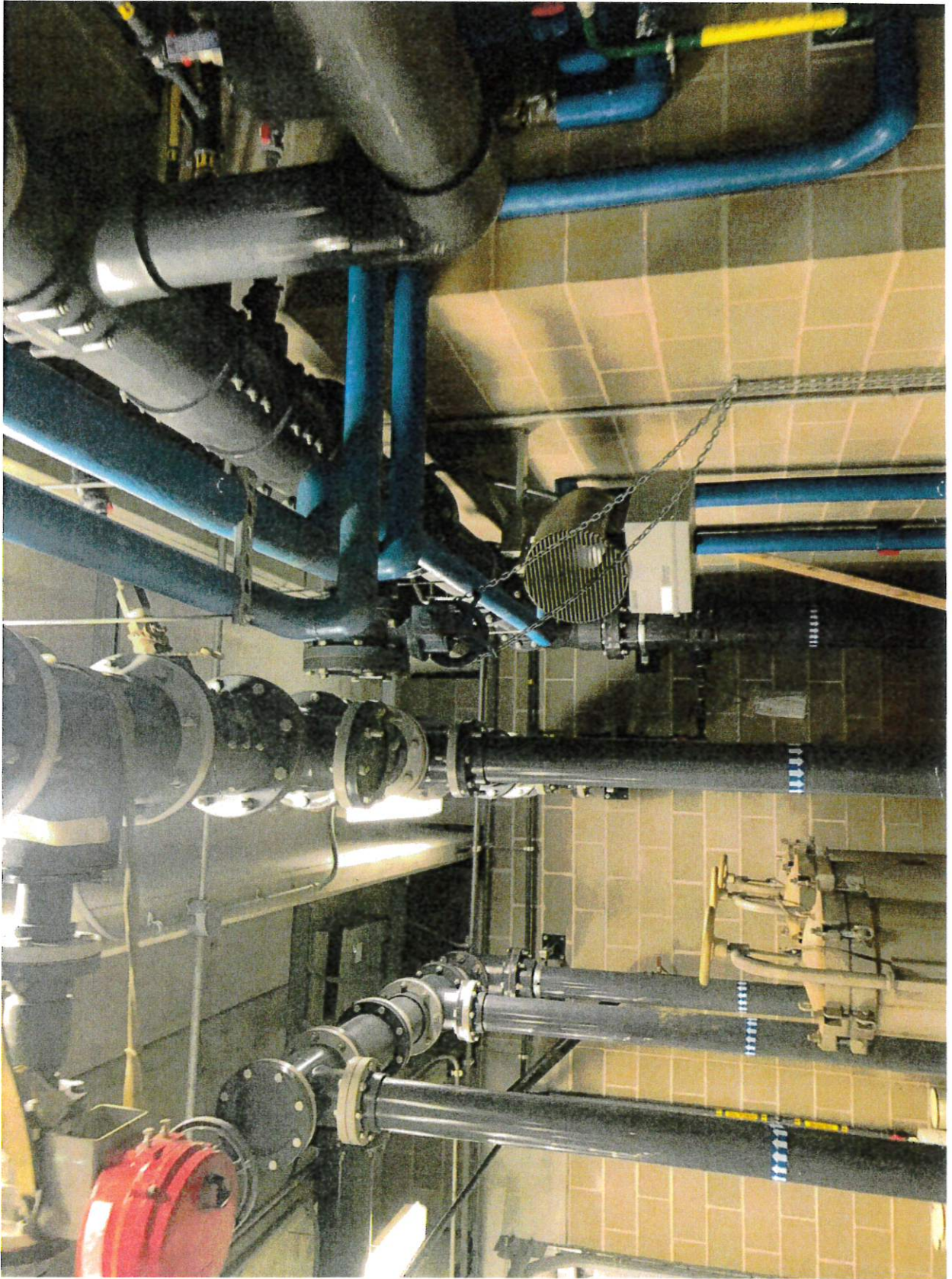


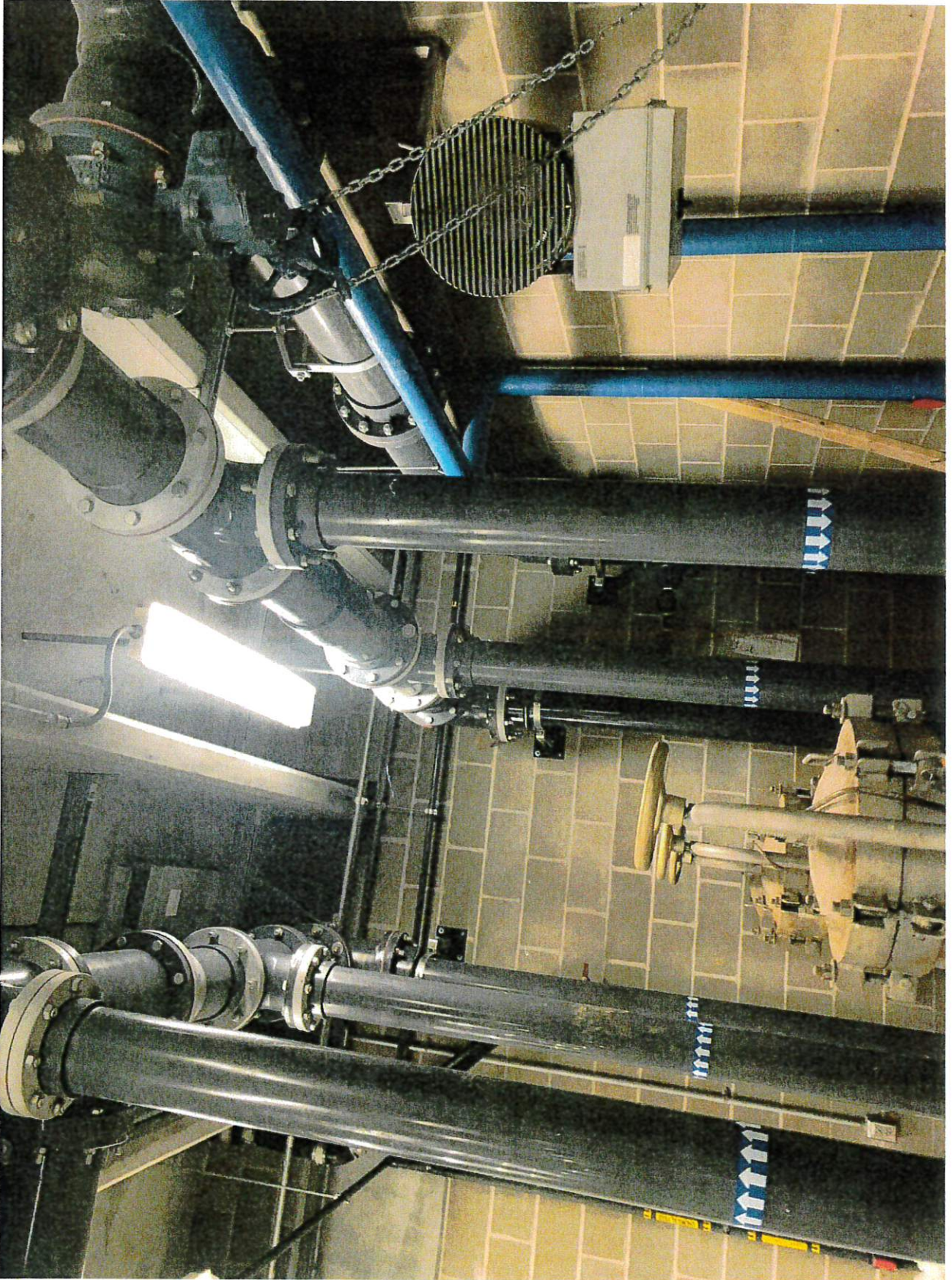








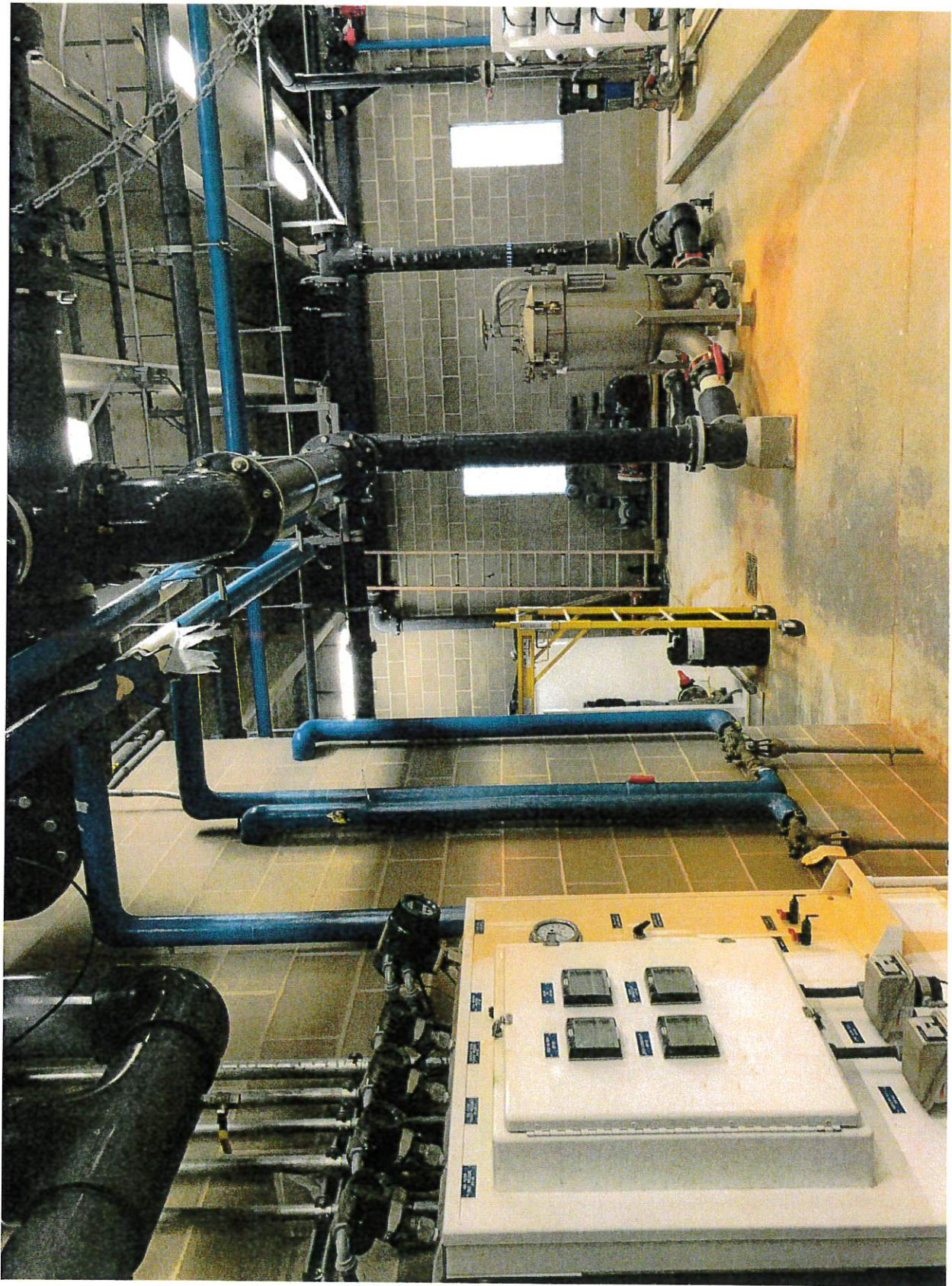






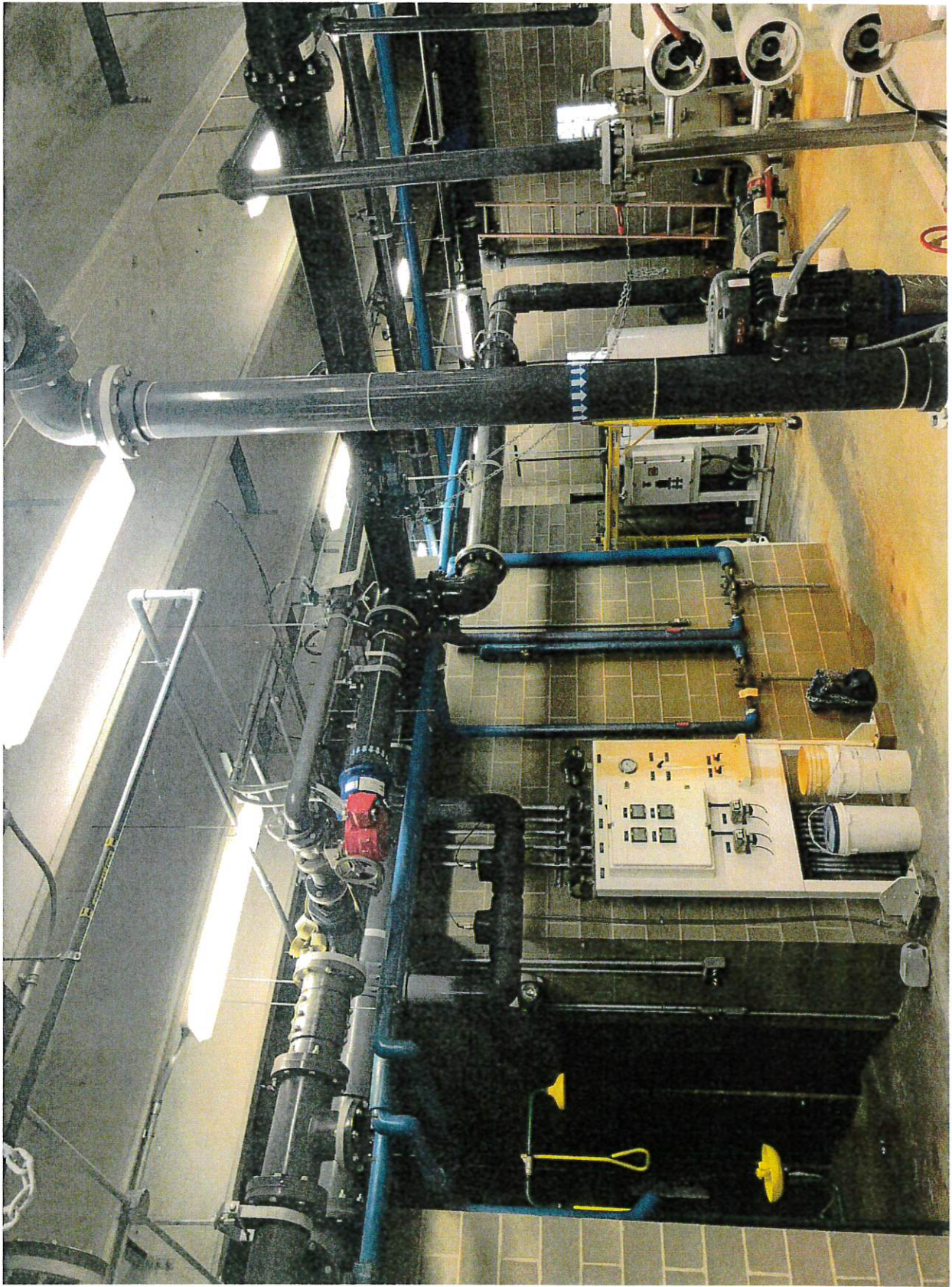


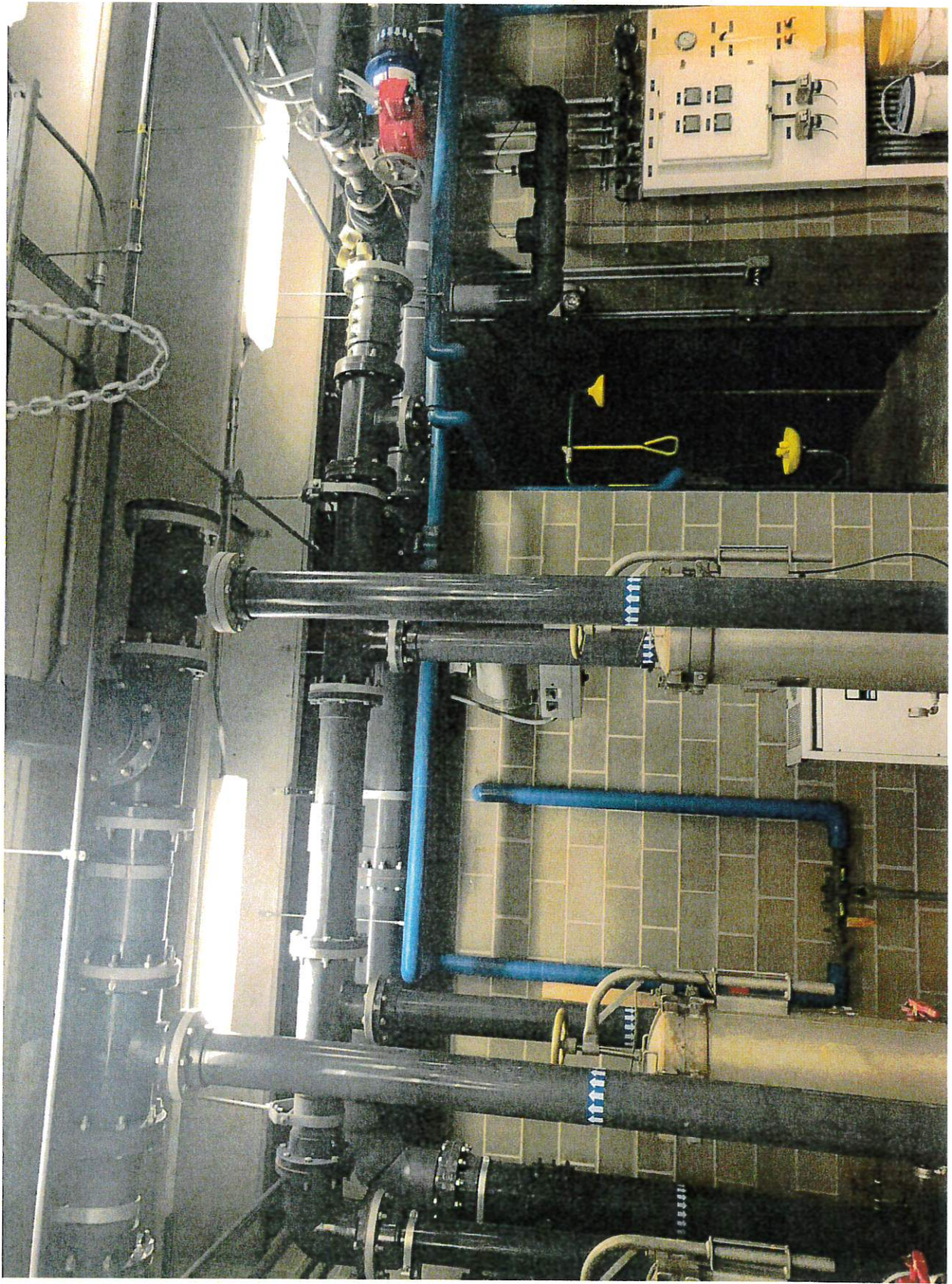






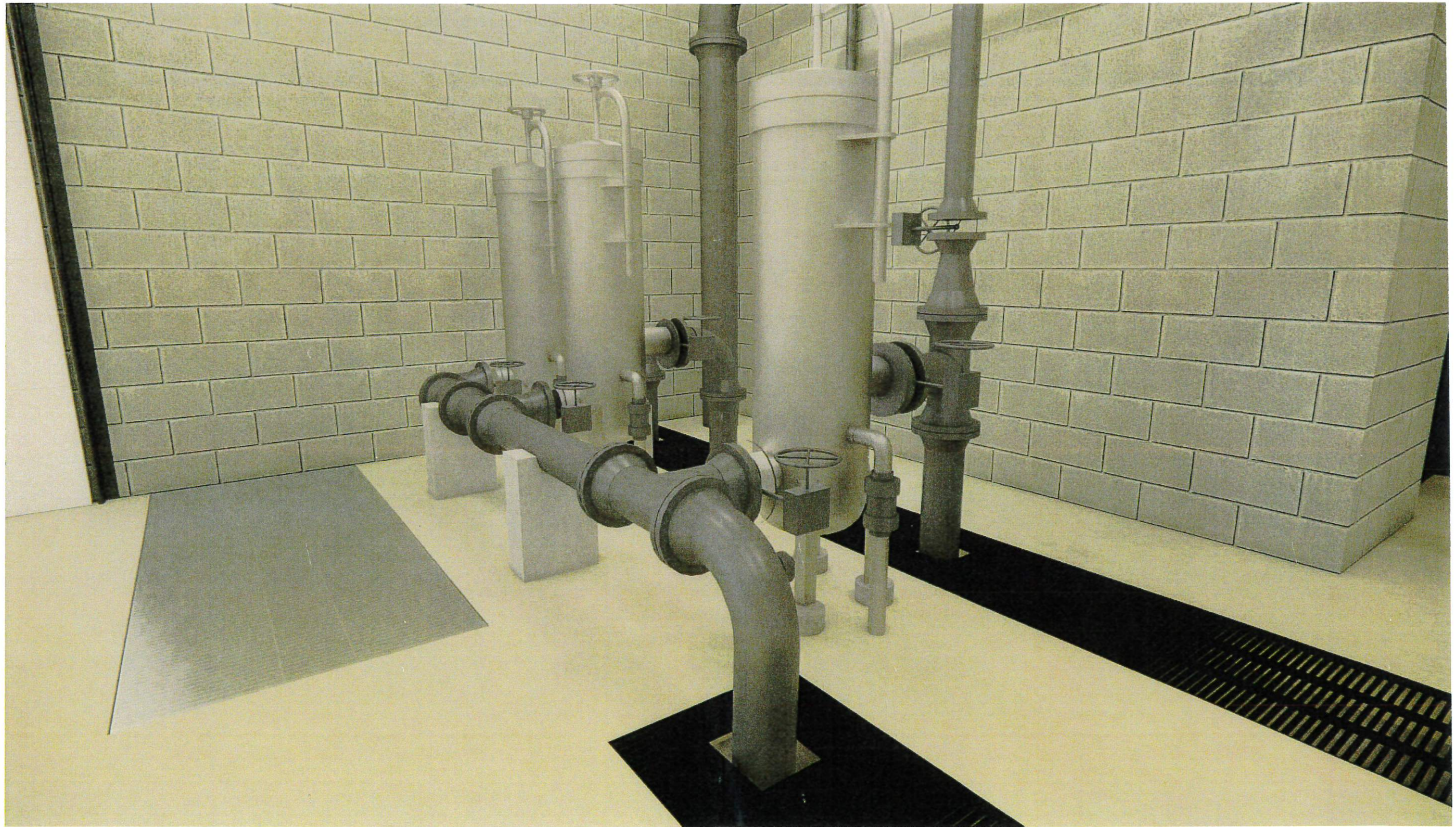




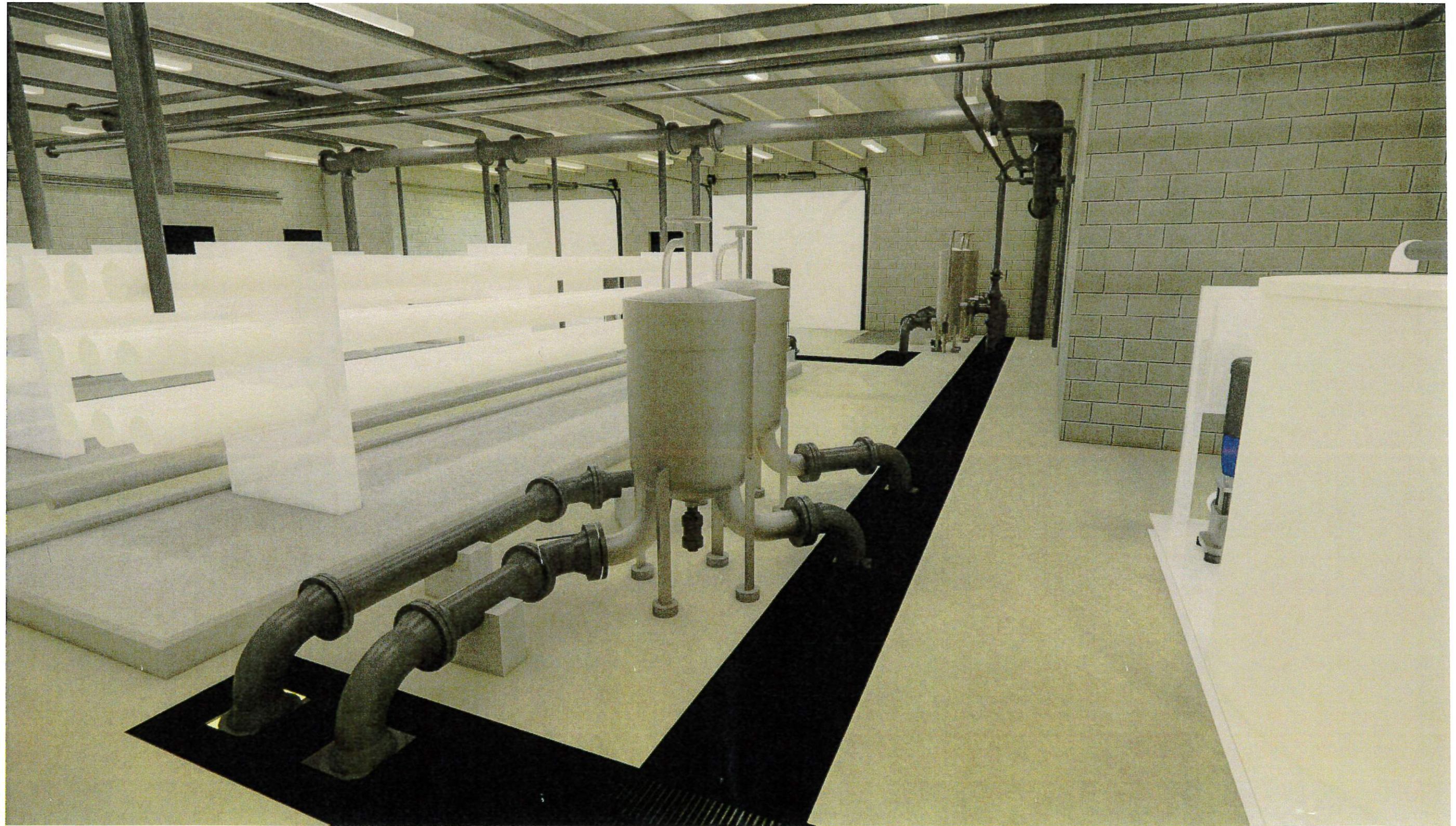




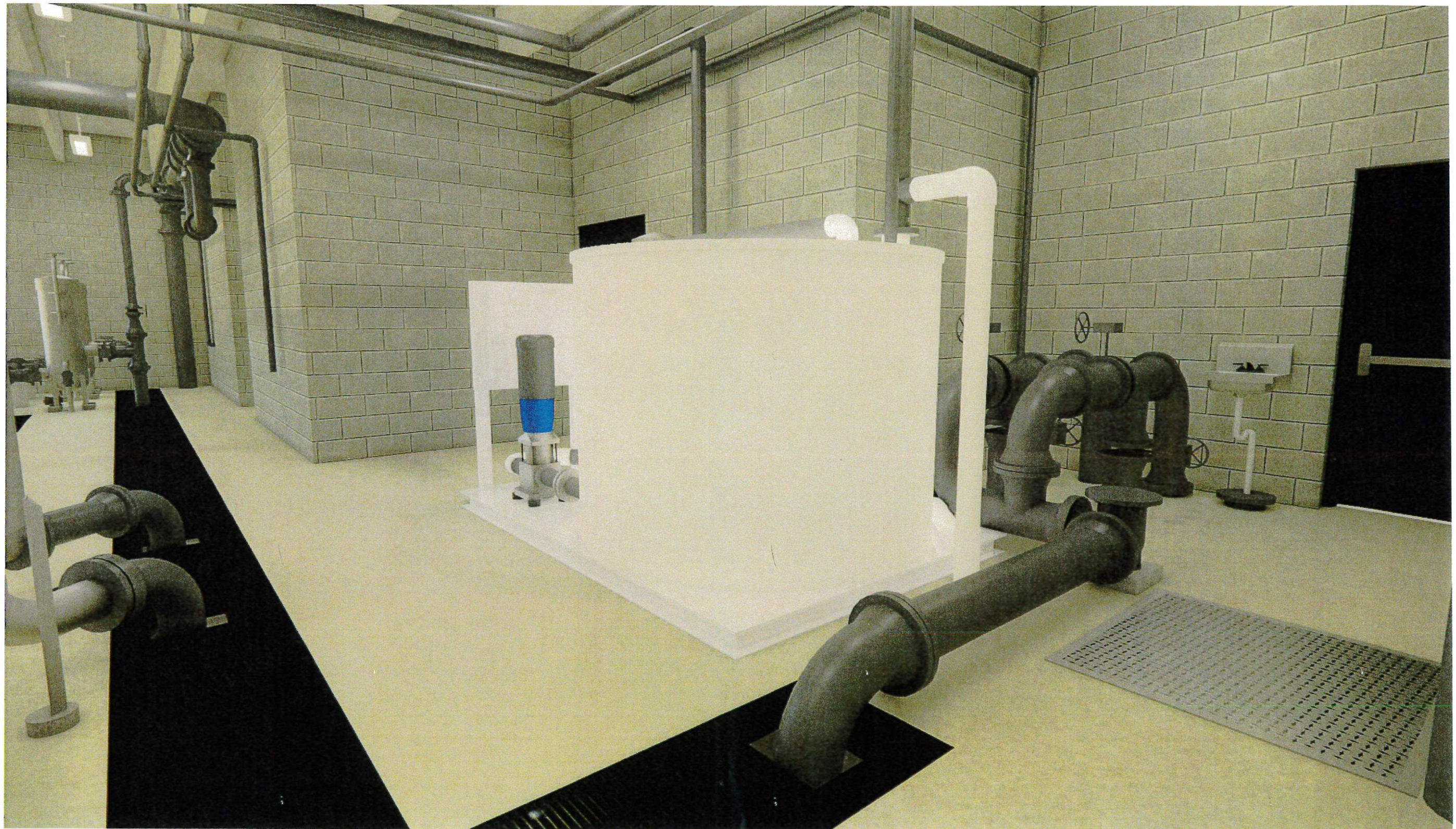
R.O. Feed Piping  
Riverside WTP Pipe Improvements



Cartridge Filter Piping  
Riverside WTP Pipe Improvements



Bag Filter Piping  
Riverside WTP Pipe Improvements



Piping Adjacent to R.O. Cleaning System  
Riverside WTP Pipe Improvements

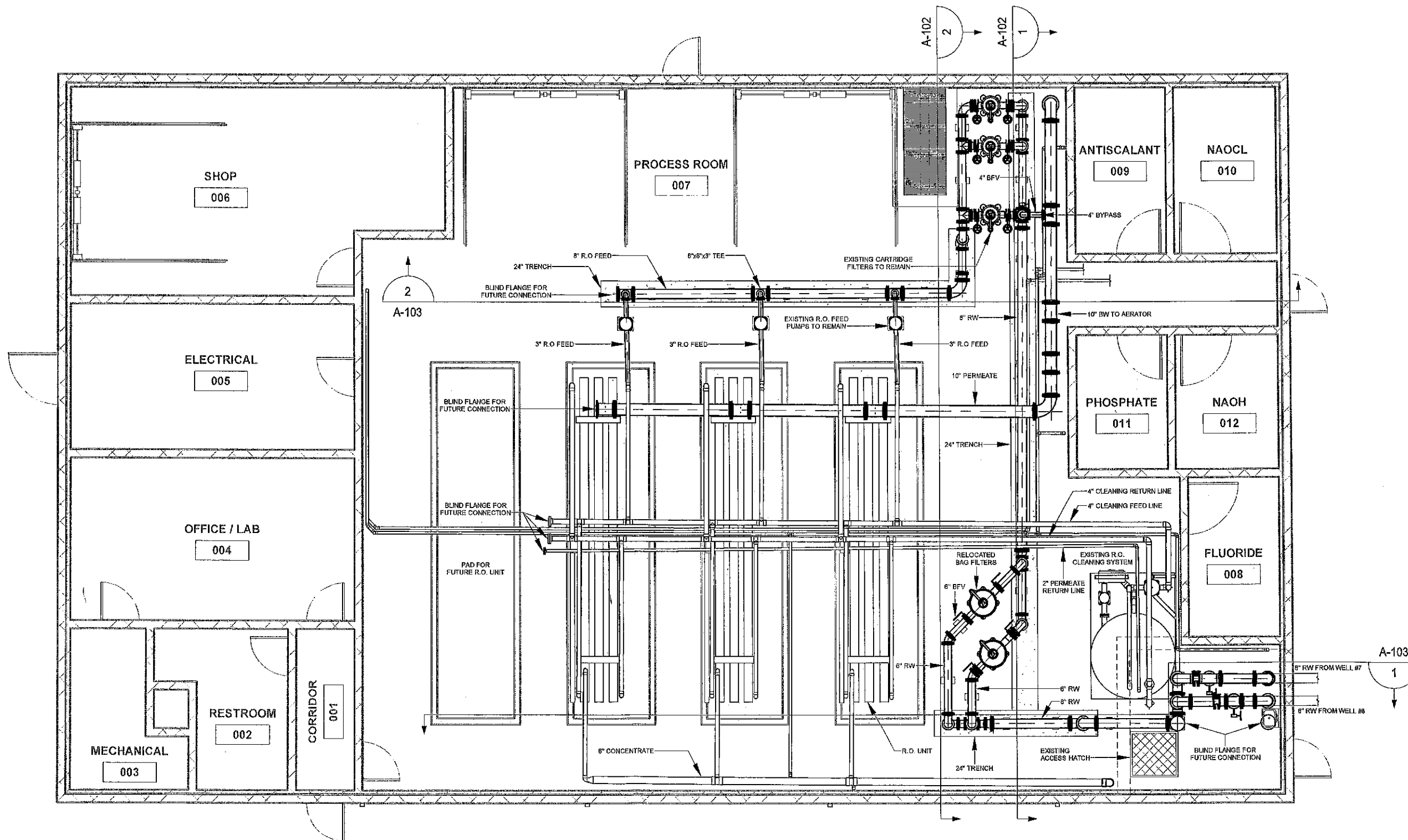


Raw Water Supply Piping  
Riverside WTP Pipe Improvements



PLOTTED: 7/19/2022 5:24:37 PM

FILE PATH: Z:\Riverside 36138 WTP Pipe Failure\Drawing Files\Rev\103-Architectural\Riverside WTP Pipe Replacement Opt 2.rvt

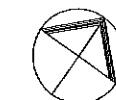


**PLAN**

1/8" = 1'-0"

**NOTES:**

1. NEW STAINLESS STEEL PIPING TO BE INSTALLED SHOWN BOLD.



As indicated

DATE	REVISIONS	SCALE	As Indicated
7-19-2022	IMPERIAL WIDE FLANGES REPLACED WITH CLASS 150 SLP-ON FLANGES FOR ALL PIPE SIZES.	DRAWN	JLE, MPL
		CHECKED	
		APPROVED	
		DATE	7-14-2022
		ISSUED FOR	REVIEW



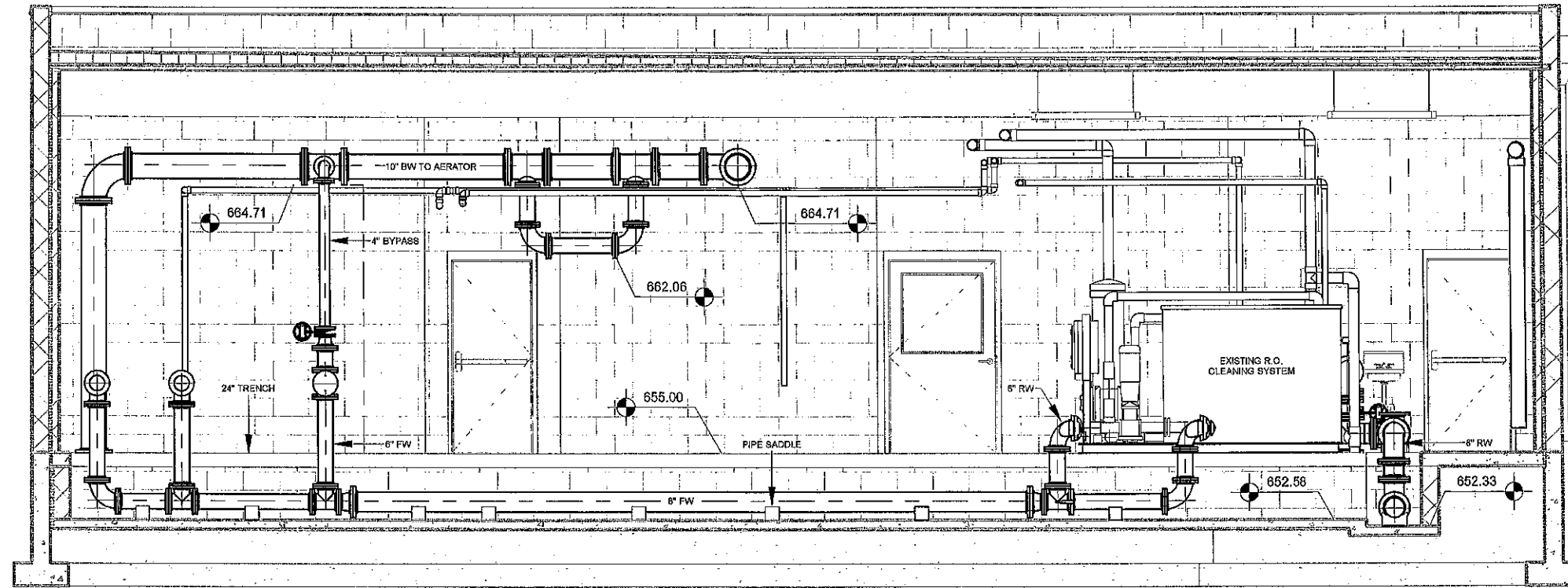
RIVERSIDE WTP PIPE IMPROVEMENTS  
CITY OF RIVERSIDE

2600 University Parkway - Suite 1 • Coralville, Iowa 52241-1565  
319-466-1000 • 319-466-1008(FAX) • 888-241-8001(WATS)

PROCESS PIPING PLAN

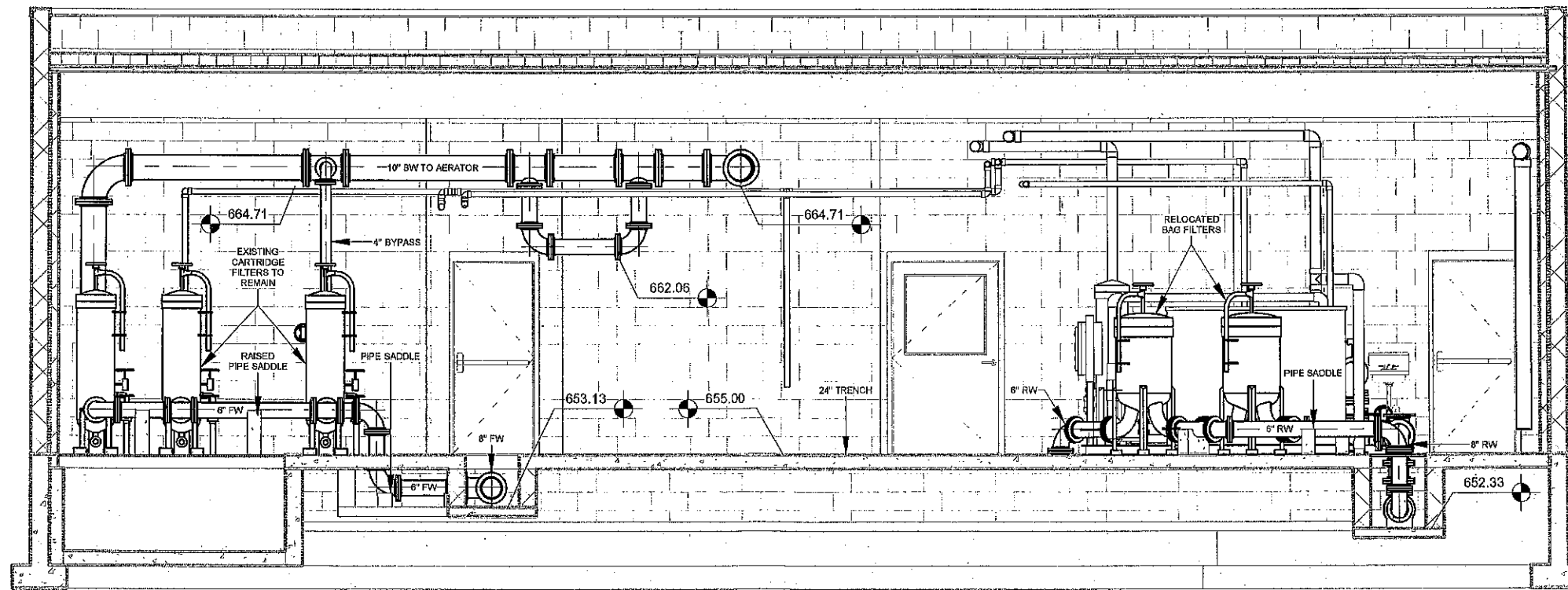
DWG. NO.	A-101
PROJECT	36138
	1 OF 3

PLOTTED: 7/19/2022 5:24:42 PM



**Piping Cross Section East**

3/16" = 1'-0"



**Piping Cross Section West**

3/16" = 1'-0"

**NOTES:**

1. NEW STAINLESS STEEL PIPING TO BE INSTALLED SHOWN BOLD.

FILE PATH: Z:\riverside 36133 WTP Pipe Failure\Drawing Files\Rev\03-Architectural\Riverside WTP Pipe Replacement Opt. 2.rvt

DATE	REVISIONS
7-18-2022	IMPERIAL WIDE FLANGES REPLACED WITH CLASS 150 SLIP-ON FLANGES FOR ALL PIPE SIZES.

SCALE	3/16" = 1'-0"
DRAWN	JLE, MPL
CHECKED	
APPROVED	
DATE	7-14-2022
ISSUED FOR	REVIEW

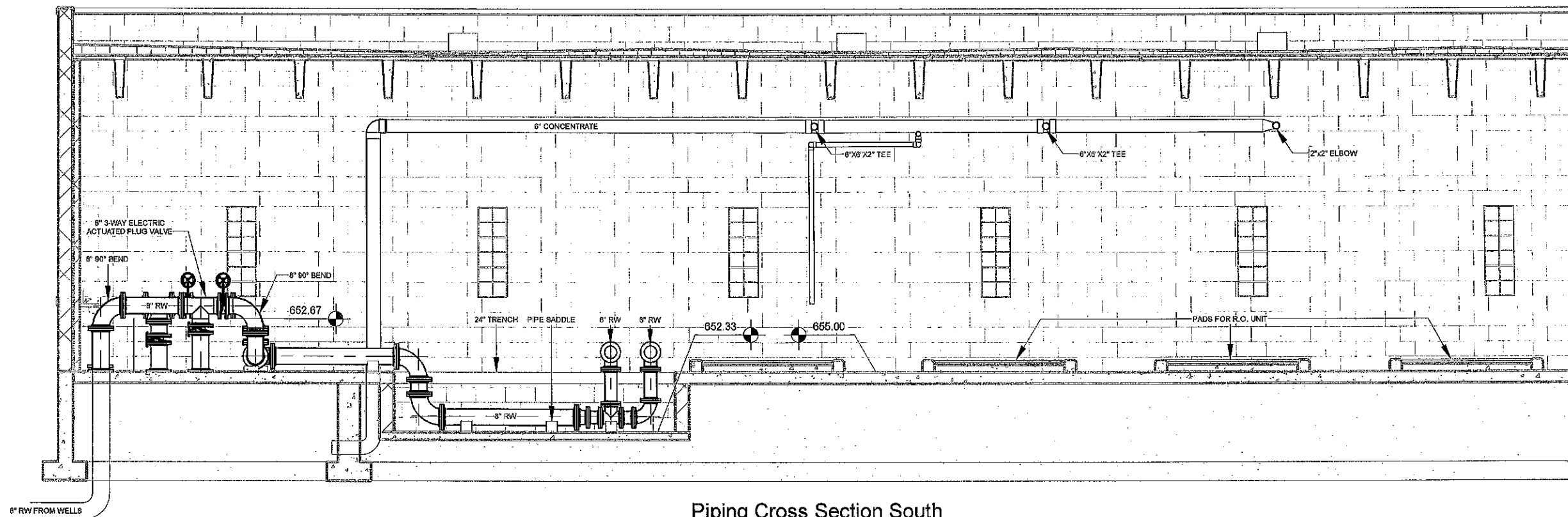


**RIVERSIDE WTP PIPE IMPROVEMENTS**  
**CITY OF RIVERSIDE**  
 2500 University Parkway - Suite 1 • Coralville, Iowa 52241-1555  
 319-466-1000 • 319-466-1008(FAX) • 888-241-8001(WATS)

**PROCESS PIPING SECTIONS**

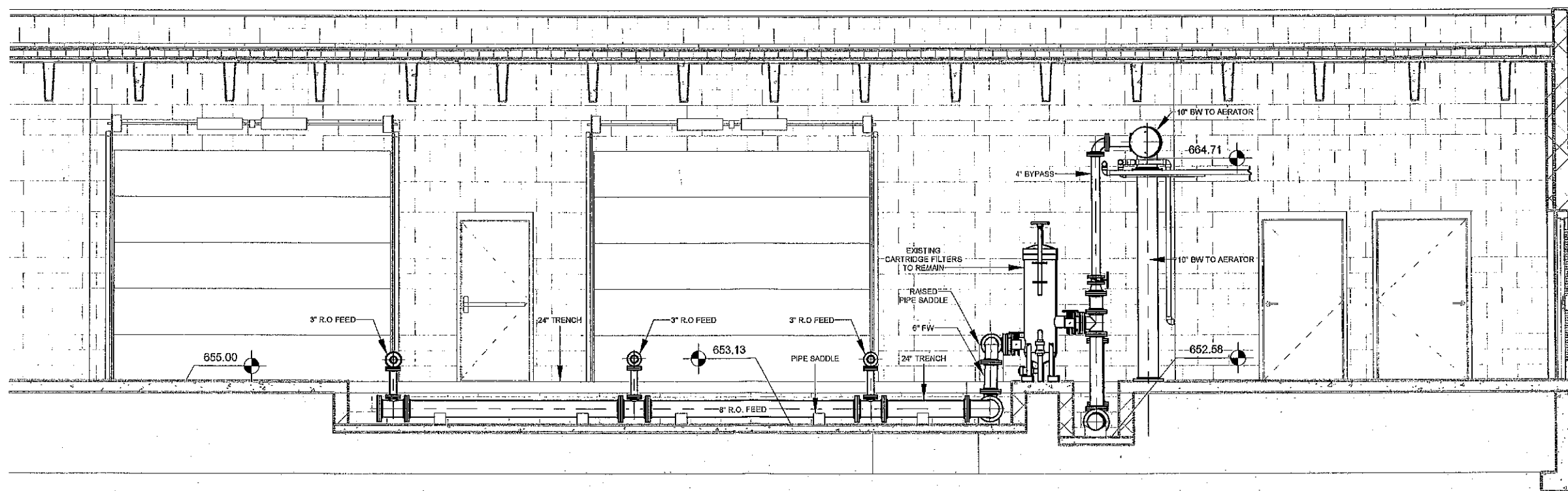
DWG. NO.	A-102
PROJECT	2 OF 3
	36133

PLOTTED: 7/19/2022 5:24:53 PM



**Piping Cross Section South**

3/16" = 1'-0"



**Piping Cross Section North**

3/16" = 1'-0"

**NOTES:**

1. NEW STAINLESS STEEL PIPING TO BE INSTALLED SHOWN BOLD.

FILE PATH: Z:\Riverside 36199 WTP Pipe Failure\Drawings\Architectural\Riverside WTP Pipe Replacement Opt 2.rvt

DATE	REVISIONS
7-10-2022	IMPERIAL WIDE FLANGES REPLACED WITH CLASS 150 SLIP-ON FLANGES FOR ALL PIPE SIZES.

SCALE	3/16" = 1'-0"
DRAWN	JLE, MFL
CHECKED	
APPROVED	
DATE	7-14-2022
ISSUED FOR	REVIEW



RIVERSIDE WTP PIPE IMPROVEMENTS  
CITY OF RIVERSIDE

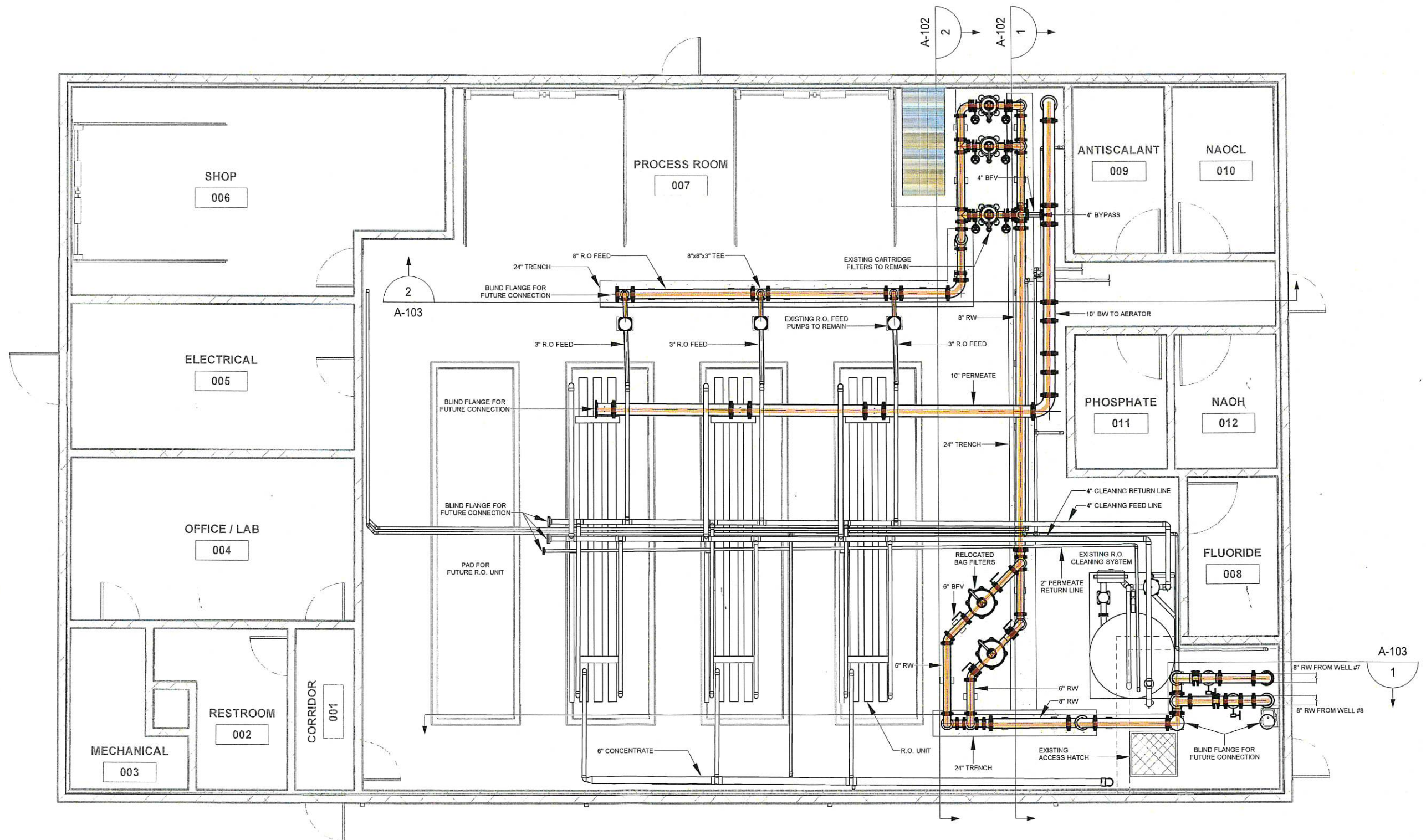
2600 University Parkway - Suite 1 • Coralville, Iowa 52241-1555  
319-466-1000 • 319-466-1008(FAX) • 888-241-8001(WATS)

PROCESS PIPING SECTIONS

DWG. NO.	A-103
PROJECT	3 OF 3
	36139

PLOTTED: 7/19/2022 4:57:02 PM

FILE PATH: Z:\Riverside 36139 WTP Pipe Failure\Drawing Files\Rev\03-Architectural\Riverside WTP Pipe Replacement Opt 2.rvt



**PLAN**  
1/8" = 1'-0"

**NOTES:**

1. NEW STAINLESS STEEL PIPING TO BE INSTALLED SHOWN BOLD.



As indicated

DATE	REVISIONS	SCALE	As indicated
7-19-2022	IMPERIAL WIDE FLANGES REPLACED WITH CLASS 150 SLIP-ON FLANGES FOR ALL PIPE SIZES.	DRAWN	JLE, MPL
		CHECKED	
		APPROVED	
		DATE	7-14-2022
		ISSUED FOR	REVIEW



**RIVERSIDE WTP PIPE IMPROVEMENTS**  
**CITY OF RIVERSIDE**

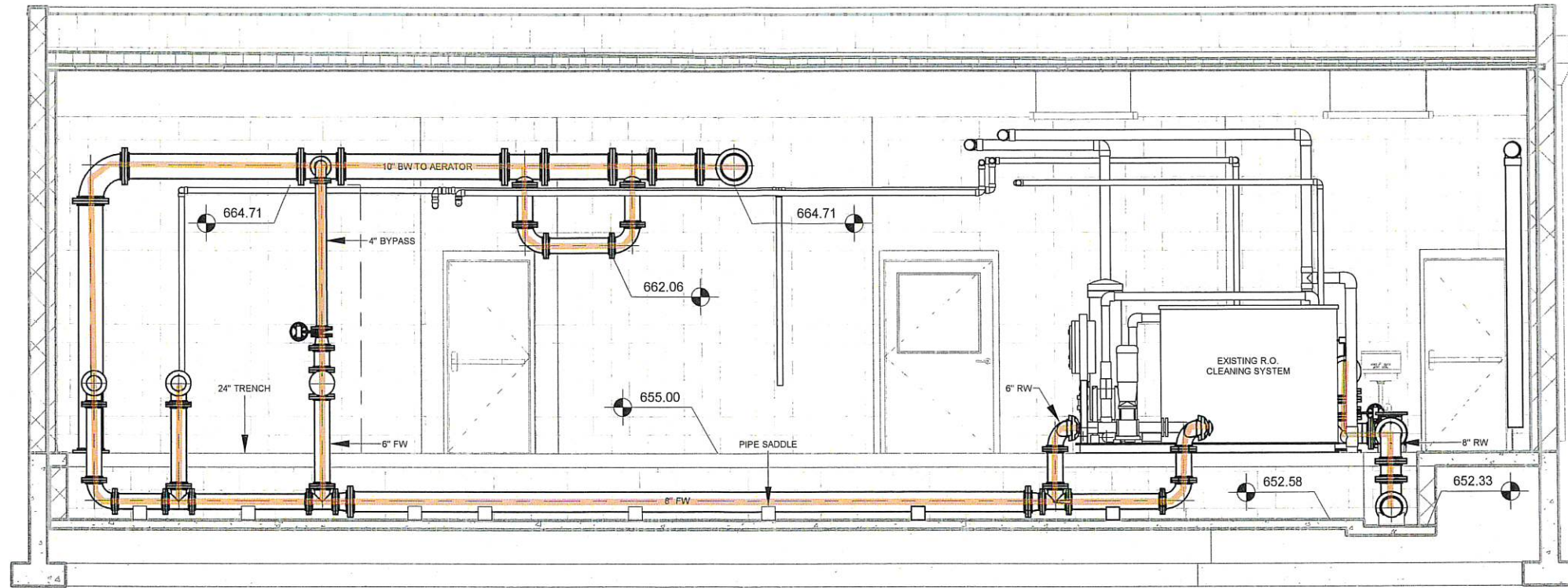
2600 University Parkway - Suite 1 • Coralville, Iowa 52241-1565  
319-466-1000 • 319-466-1008(FAX) • 888-241-8001(WATS)

**PROCESS PIPING PLAN**

DWG. NO.
A-101
1 OF 3
PROJECT 36139

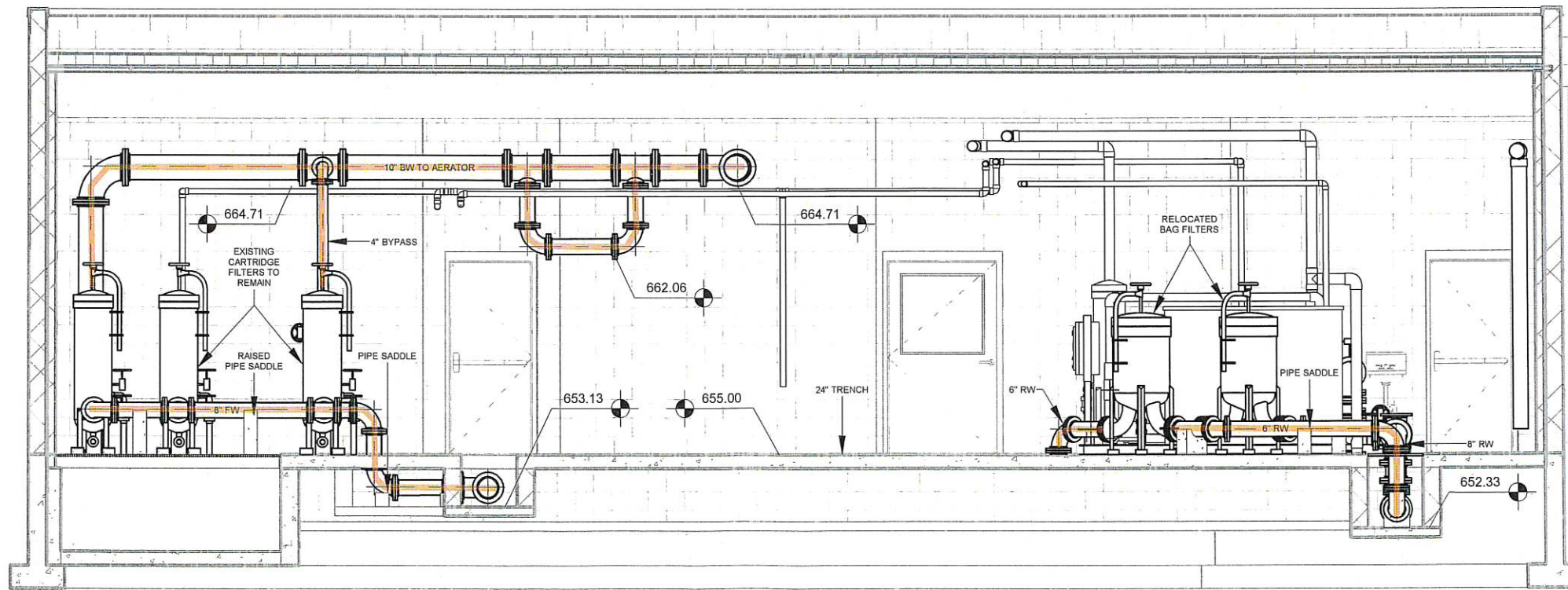
PLOTTED: 7/19/2022 4:57:09 PM

FILE PATH: Z:\Riverside 36139 WTP Pipe Failure\Drawing Files\Revit\03-Architectural\Riverside WTP Pipe Replacement Opt 2.rvt



**Piping Cross Section East**

3/16" = 1'-0"



**Piping Cross Section West**

3/16" = 1'-0"

**NOTES:**

1. NEW STAINLESS STEEL PIPING TO BE INSTALLED SHOWN BOLD.

DATE	REVISIONS
7-19-2022	IMPERIAL WIDE FLANGES REPLACED WITH CLASS 159 SLIP-ON FLANGES FOR ALL PIPE SIZES.

SCALE	3/16" = 1'-0"
DRAWN	JLE, MPL
CHECKED	
APPROVED	
DATE	7-14-2022
ISSUED FOR	REVIEW



**RIVERSIDE WTP PIPE IMPROVEMENTS  
CITY OF RIVERSIDE**

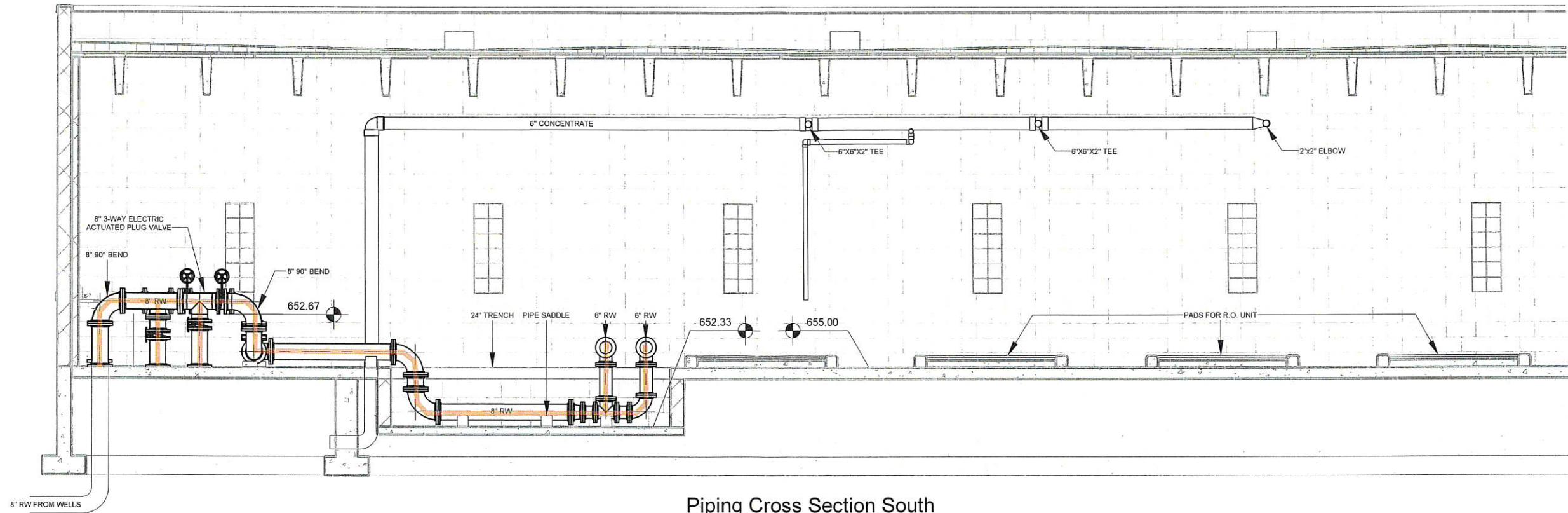
2600 University Parkway - Suite 1 • Coralville, Iowa 52241-1565  
319-466-1000 • 319-466-1008(FAX) • 888-241-8001(WATS)

**PROCESS PIPING SECTIONS**

DWG. NO.	A-102
PROJECT	36139
	2 OF 3

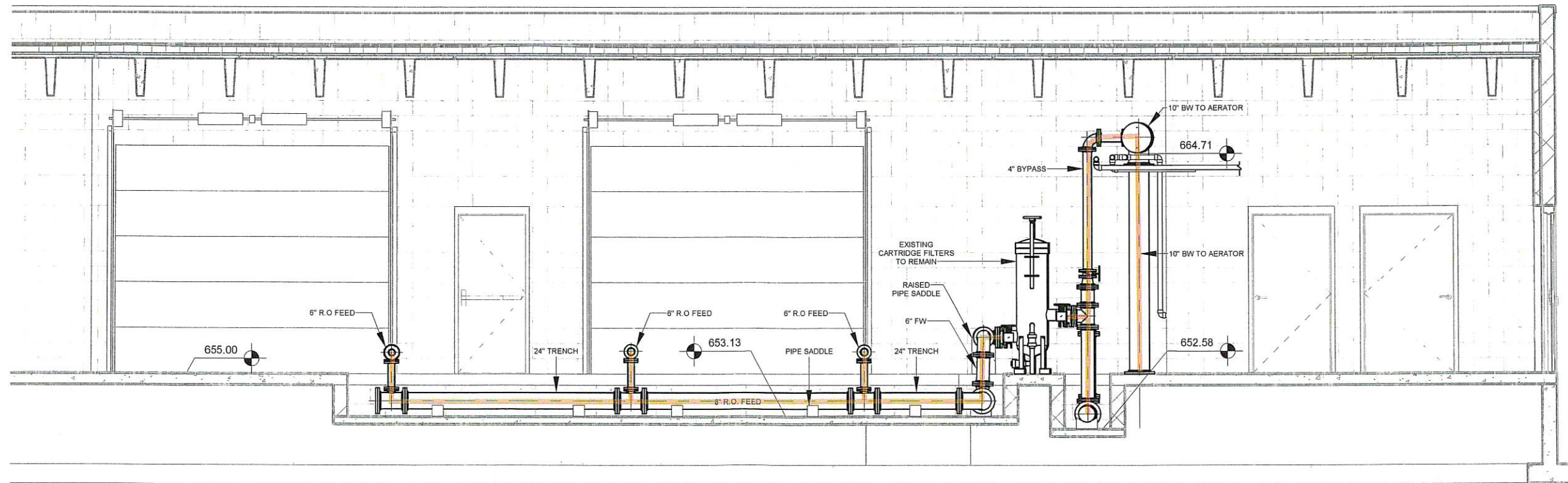
PLOTTED: 7/19/2022 4:58:36 PM

FILE PATH: Z:\Riverside 36139 WTP Pipe Failure\Drawing Files\Rev\03-Architectural\Riverside WTP Pipe Replacement Opt 2.rvt



**Piping Cross Section South**

3/16" = 1'-0"



**Piping Cross Section North**

3/16" = 1'-0"

**NOTES:**

1. NEW STAINLESS STEEL PIPING TO BE INSTALLED SHOWN BOLD.

DATE	REVISIONS
7-19-2022	IMPERIAL WIDE FLANGES REPLACED WITH CLASS 150 SLIP-ON FLANGES FOR ALL PIPE SIZES.

SCALE	3/16" = 1'-0"
DRAWN	JLE, MPL
CHECKED	
APPROVED	
DATE	7-14-2022
ISSUED FOR	REVIEW



**RIVERSIDE WTP PIPE IMPROVEMENTS  
CITY OF RIVERSIDE**

2600 University Parkway - Suite 1 • Coralville, Iowa 52241-1565  
319-466-1000 • 319-466-1008(FAX) • 888-241-8001(WATS)

**PROCESS PIPING SECTIONS**

DWG. NO.	A-103
PROJECT	36139
	3 OF 3